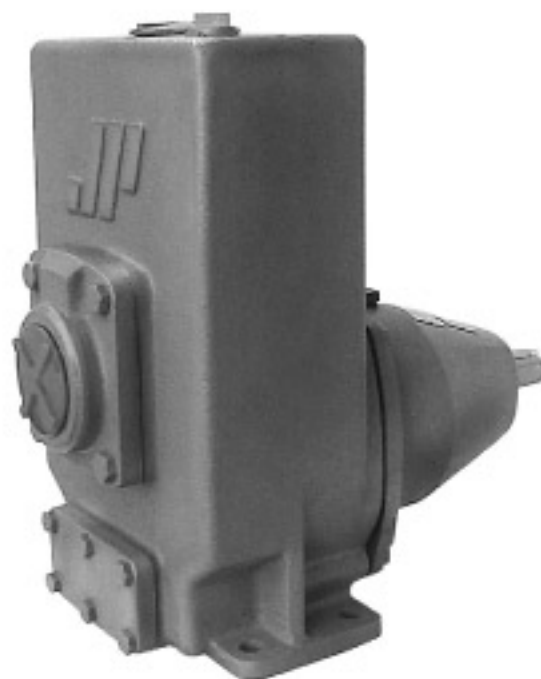


# Selfpriming Non clog Pump KGEN

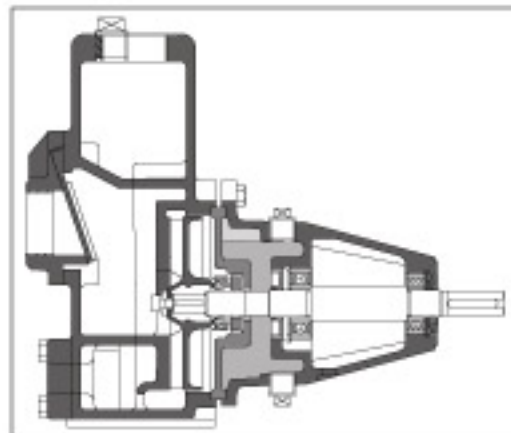


## Applications

- Dewatering swamps, trenches, basements,
- Construction sites, swimming pools etc.
- Lift irrigation and horticulture water spraying.

## Range

Capacity	- upto 350 m <sup>3</sup> /hr.
Head	- upto 60 m
Suction head	- upto 8 mtrs.
Material	- Cast Iron & Bronze.
Solids	- upto 41 mm dia.
Viscosity	- upto 100 mm <sup>2</sup> /sec.



## Features

- Perfect sealing assured by high quality mechanical seal which cannot run dry because of in-pump oil reservoir.
- Graded casting & EN - 8 shaft, increase service life.
- Bearings greased for life, save external lubrication. Minimum need for inspection and maintenance.
- Drive options, of electric motor, coupled or monoblock and belt drive versions, or by petrol/diesel engine.

## Design

- Perfect selfpriming action with maximum suction head of 8 mtrs.
- Impellers with wider flow passage avoid clogging and can handle solids upto 41 mm dia.
- Back pullout design, simplifies inspection and maintenance.
- Compact, light weight & yet rugged construction.

Performance data

KGEN	3	6	9	12	15	18	24	30	36	45	60	75	m <sup>3</sup> /h	Size*	mm #	Kg
11-3	15.2/0.43 0.6	13.7/0.55 1.5	11.5/0.63 2.8	9.0/0.68 4.3									Hm/kW NPSH	1"	6	15
11-4	16.3/0.68 0.6	15.2/0.71 1.0	14.2/0.75 1.3	13.0/0.79 1.9	11.6/0.84 2.9	10.0/0.9 4.8								1"	11	17
12b-5	19.8/1.05 1.2	19.0/1.12 1.25	17.8/1.16 1.4	16.5/1.21 1.6	15.4/1.29 2.1	14.0/1.36 2.8	10.2/1.49 5.0							2"	8	30
12-5		19.8/1.10 1.2	18.9/1.17 1.3	18.0/1.22 1.6	17.1/1.3 2.0	16.1/1.36 3.0	13.7/1.56 5.0	10.3/1.73 7.3						2"	12	30
12-6				19.2/1.58 0.9	18.5/1.60 1.0	17.8/1.66 1.1	16.7/1.79 1.5	15.5/1.97 2.0	14.4/2.15 2.7	12.0/2.45 4.4				2"	19	40
14-8					22.5/2.70 1.7	22.0/2.80 1.7	21.0/3.00 1.7	20.5/3.20 1.8	19.8/3.40 2.0	18.5/3.60 2.6	15.0/3.80 4.4	10.2/3.80 7.5		80	18	48
15-6				29.2/2.85 2.0	28.0/2.95 2.1	27.0/3.05 2.2	25.0/3.25 3.0	23.0/3.50 3.4	20.8/3.70 4.4	16.0/3.95 6.3				2"	13	40
16-3	32.0/1.25 0.35	28.5/1.41 1.0	24.3/1.56 2.0	19.2/1.73 4.3										1"	5	26
16-6				35.0/3.55 2.5	34.5/3.70 2.5	34.0/3.80 2.6	33.0/4.25 3.0	32.0/4.60 3.8	29.0/4.95 5.4	22.5/5.30 7.0				2"	13	40
18-4	39.5/2.34 2.5	37.0/2.58 2.25	34.0/2.85 2.6	31.0/3.13 3.3	27.5/3.40 4.8									1"	5	65
20b-5		48.0/3.44 2.3	47.5/3.75 2.2	46.0/4.10 2.2	44.0/4.4 2.6	43.0/4.71 3.4	33.0/5.25 6.8							2"	3	90
22-6				57.0/6.25 2.9	56.0/6.60 2.6	55.0/6.95 2.5	53.0/7.69 2.5	50.0/8.38 2.8	47.0/9.10 2.9	42.0/10.0 3.6				2"	9	110

For 50 Hz n = 2900 min<sup>-1</sup>

KGEN	20	30	40	50	60	80	100	125	150	200	250	300	350	m <sup>3</sup> /h	Size*	mm #	Kg
21-8	12.7/2.4 2.0	12.3/2.5 2.0	11.9/2.7 2.5	11.4/2.9 3.4	10.7/3.1 4.4	8.7/3.3 6.7								Hm/kW NPSH	80	22	100
25N-10		16.5/5.0 2.1	16.0/5.1 2.3	15.6/5.4 2.5	15.0/5.7 2.7	13.8/6.2 3.3	12.3/6.8 4.8								100	25	150
29Na-15				23.1/10.2 1.8	23.0/10.5 2.0	22.1/11.1 2.4	21.0/12.0 2.6	20.1/13.0 2.8	19.0/13.9 3.2	17.0/14.0 4.2	12.4/14.0 5.4				150	25	210
29Nb-15				21.0/8.7 2.3	20.4/8.9 2.4	19.3/9.3 2.7	18.1/9.6 2.9	16.3/9.8 3.3	14.0/9.6 4.1						150	25	210
29N-15				22.2/11.8 2.1	22.0/12.2 2.1	21.4/13.0 2.2	20.9/13.9 2.3	20.1/14.7 2.6	19.3/15.5 2.8	16.4/16.3 3.3	12.2/16.8 4.2				150	42	210

For 50 Hz n = 1450 min<sup>-1</sup>

\*Suction discharge ports. # Max permissible solid size.

Manufactured by :



**Johnson Pump (India) Limited**

Ahmedabad. In collaboration with Johnson Pump AB, Sweden.  
The company reserves the right to change any specifications without prior notice



Exclusively marketed by :

**A.T.E. Marketing Private Limited**

A - 19, CTS No. 689, Veera Desai Road, Anchari West, Mumbai - 400 053.

Tel.: 022 5678 6100. Fax: 022 2673 2448. E Mail: pumps@ateindia.com Website: www.ateindia.com



Regional offices :

**AHMEDABAD**  
Mistry Chambers,  
Khanpur - 380 001.  
Tel.: 079 - 2590 0552.  
Fax: 079 - 2590 0145.  
E Mail: ate\_ahd@ateindia.com

**BANGALORE**  
No. 6, Rice Lane,  
Richmond Town - 560 025.  
Tel.: 080 - 5114 4144.  
Fax: 080 - 2212 3544.  
E Mail: ate\_bgl@ateindia.com

**CHENNAI**  
No. 2, 4th Street,  
Karpagam Avenue - 600 028.  
Tel.: 044 - 2461 4634.  
Fax: 044 - 2461 4608.  
E Mail: ate\_chennai@ateindia.com

**KOLKATA**  
Utsarga, 2nd Floor,  
220/1, Hemanth Mukhopadhyay  
Sarani - 700 029.  
Tel.: 033 - 2485 9806.  
Fax: 033 - 2485 9820.  
E Mail: ate\_kol@ateindia.com

**NEW DELHI**  
504 - 506, 510,  
Sunjea Towers II, District Centre,  
Janakpuri - 110 058.  
Tel.: 011 - 2550 7012.  
Fax: 011 - 2550 7809.  
E Mail: ate\_delhi@ateindia.com